



Latrophilin-1 Polyclonal Antibody

Catalog No	YP-Ab-13388
Isotype	IgG
Reactivity	Human;Mouse;Rat
Applications	WB;ELISA;IHC
Gene Name	LPHN1
Protein Name	Latrophilin-1
Immunogen	The antiserum was produced against synthesized peptide derived from human LPHN1. AA range:561-610
Specificity	Latrophilin-1 Polyclonal Antibody detects endogenous levels of Latrophilin-1 protein.
Formulation	Liquid in PBS containing 50% glycerol, 0.5% BSA and 0.02% sodium azide.
Source	Polyclonal, Rabbit,IgG
Purification	The antibody was affinity-purified from rabbit antiserum by affinity-chromatography using epitope-specific immunogen.
Dilution	WB 1:500-2000;IHC-p 1:50-300; ELISA 2000-20000
Concentration	1 mg/ml
Purity	≥90%
Storage Stability	-20°C/1 year
Synonyms	LPHN1; KIAA0821; LEC2; Latrophilin-1; Calcium-independent alpha-latrotoxin receptor 1; CIRL-1; Lectomedin-2
Observed Band	
Cell Pathway	Cell membrane; Multi-pass membrane protein. Cell projection, axon . Cell projection, growth cone . Cell junction, synapse . Cell junction, synapse, presynaptic cell membrane . Cell junction, synapse, synaptosome . Colocalizes with TENM2 on the cell surface, across intercellular junctions and on nerve terminals near synaptic clefts. .
Tissue Specificity	Brain,Lung,T-cell,Whole embryo,
Function	domain:The extracellular domain coupled to the a single transmembrane region are sufficient for full responsiveness to alpha-latrotoxin.,function:Calcium-independent receptor of high affinity for alpha-latrotoxin, an excitatory neurotoxin present in black widow spider venom which triggers massive exocytosis from neurons and neuroendocrine cells. Receptor probably implicated in the regulation of exocytosis.,PTM:Proteolytically cleaved into 2 subunits, an extracellular subunit and a seven-transmembrane subunit. This proteolytic processing takes place early in the biosynthetic pathway, either in the endoplasmic reticulum or in the early compartment of the Golgi apparatus.,similarity:Belongs to the G-protein coupled receptor 2 family. LN-TM7 subfamily.,similarity:Contains 1 GPS domain.,similarity:Contains 1



olfactomedin-like domain.,similarity:Contains 1 SUEL-type lectin domain.,subunit:Form

Background

This gene encodes a member of the latrophilin subfamily of G-protein coupled receptors (GPCR). Latrophilins may function in both cell adhesion and signal transduction. In experiments with non-human species, endogenous proteolytic cleavage within a cysteine-rich GPS (G-protein-coupled-receptor proteolysis site) domain resulted in two subunits (a large extracellular N-terminal cell adhesion subunit and a subunit with substantial similarity to the secretin/calcitonin family of GPCRs) being non-covalently bound at the cell membrane. Latrophilin-1 has been shown to recruit the neurotoxin from black widow spider venom, alpha-latrotoxin, to the synapse plasma membrane. Alternative splicing results in multiple variants encoding distinct isoforms.[provided by RefSeq, Oct 2008],

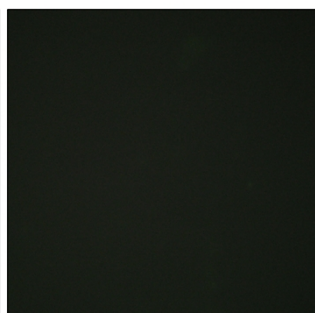
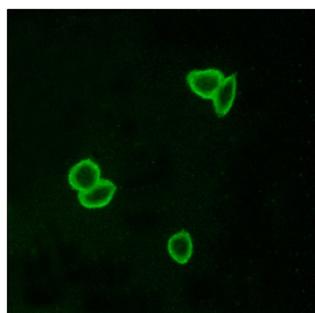
matters needing attention

Avoid repeated freezing and thawing!

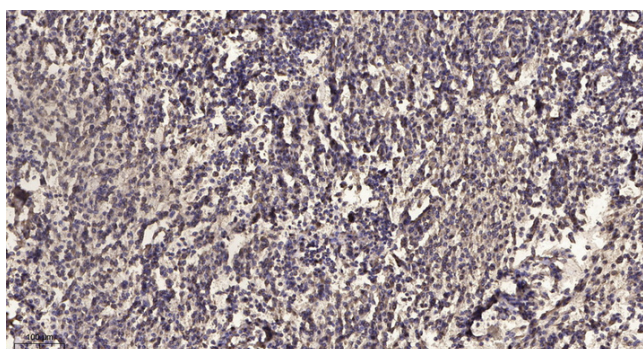
Usage suggestions

This product can be used in immunological reaction related experiments. For more information, please consult technical personnel.

Products Images



Immunofluorescence analysis of LOVO cells, using LPHN1 Antibody. The picture on the right is blocked with the synthesized peptide.



Immunohistochemical analysis of paraffin-embedded human meningioma. 1, Antibody was diluted at 1:200(4 ° overnight). 2, Tris-EDTA,pH9.0 was used for antigen retrieval. 3,Secondary antibody was diluted at 1:200(room temperature, 45min).